



ADVANTAGE HOMES

2017 N. HARMONY TOWN HALL RD.
JANESVILLE, WI 53546
608.756.2989 EXT 141

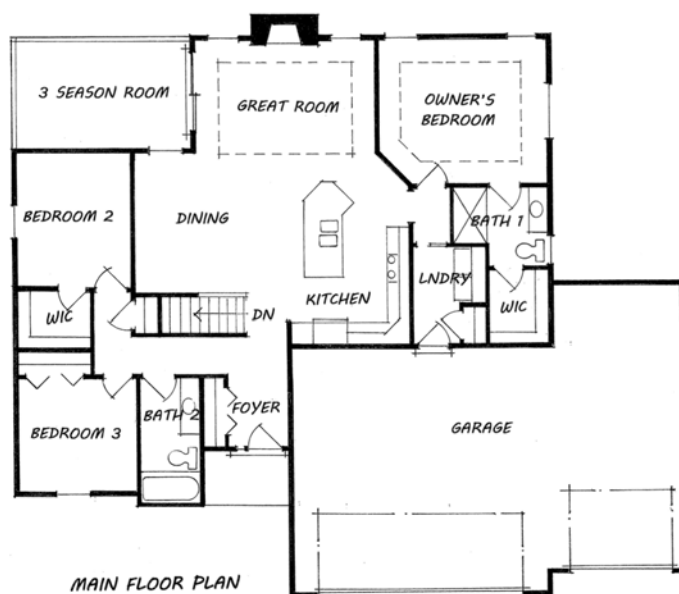


Advantage Homes brings you the Bradenton. Located in The Ridges sub-division, where you can enjoy an inviting neighborhood in a rural-like setting. This attractive home plan is complimented by an airy and open design that is great for entertaining.

**5484 Arrowood Lane
Milton**

SQUARE FEET: 1,510 | BEDS: 3 | BATHS: 2

A Must-See, Charming Custom-Built Ranch



Home Features:

- TRAY CEILINGS IN OWNERS BEDROOM AND GREAT ROOM
- 9' CEILING ON MAIN FLOOR
- 16' x 10' THREE-SEASONS ROOM
- DIRECT VENT GAS FIREPLACE WITH FACING TO MANTLE
- OWNER'S SUITE WITH LARGE, WALK-IN CLOSET
- SPLIT-BEDROOM FLOORPLAN
- QUARTZ KITCHEN COUNTERTOP
- MAPLE STAINED DRAWERS AND CABINET DOORS
- 3-CAR GARAGE

www.buildadvantagehomes.com